



FREEHOLD

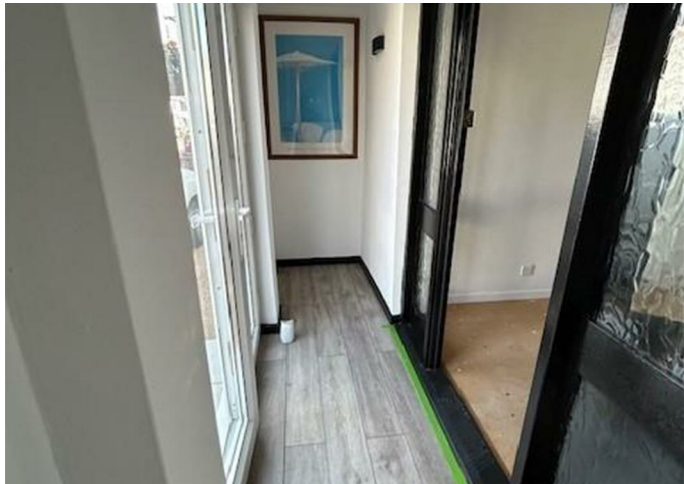
House - End Terrace

BENETS ROAD, HORNCHURCH, RM11 3PU

Offers In The Region Of
£600,000

FEATURES

- 4 Bedrooms
- Kitchen/Dinner
- F/F Family Bathroom
- Gas Central Heating
- Through/lounge
- G/F Shower Room
- Double Glazed
- Off Street Parking



4 Bedroom House - End Terrace located in Hornchurch

Offers in the region £600,000 - £650,000. Steps have great pleasure in offering for sale this CHAIN FREE 4 Bedroom end of terrace extended family home. The property is located on the sort after Dury Falls Development close to the Emerson Park borders and Upminster Bridge District Line tube station. The property boast 2 bathrooms, through lounge, kitchen/dinner and off street parking. Council Tax Band: D

Call us on

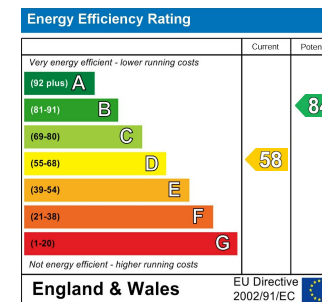
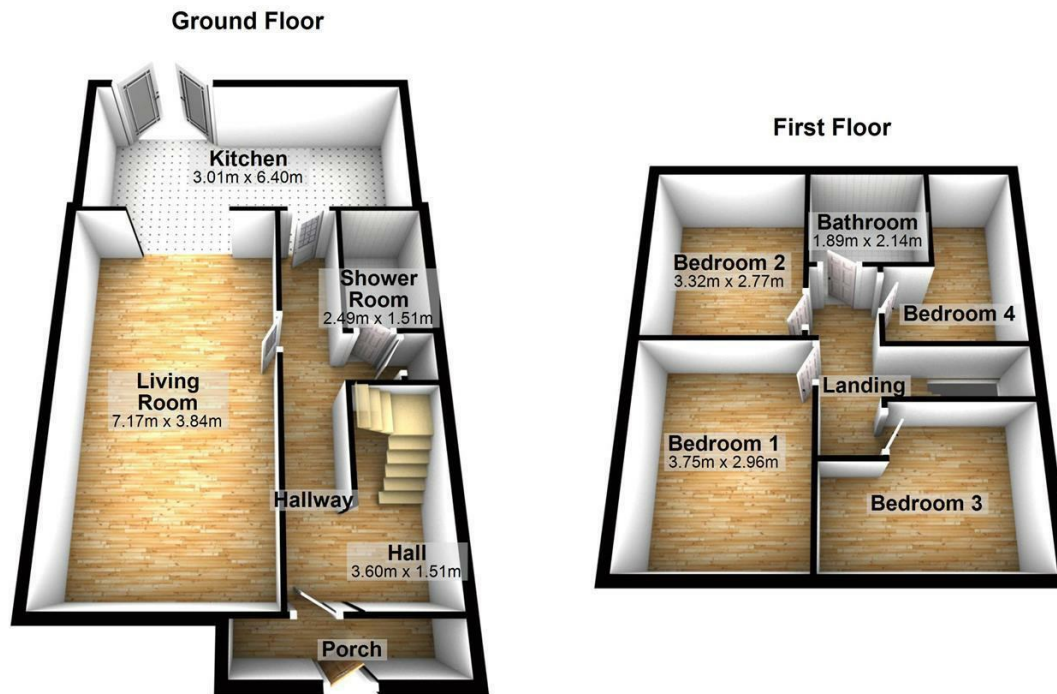
020 8593 5933

dagenham@steps.me.uk

www.steps.me.uk

Council Tax Band

D



Agents Note: Whilst every care has been taken to prepare these particulars, they are for guidance purposes only. All measurements are approximate and are for general guidance purposes only and whilst every care has been taken to ensure their accuracy, they should not be relied upon and potential buyers are advised to recheck the measurements.

